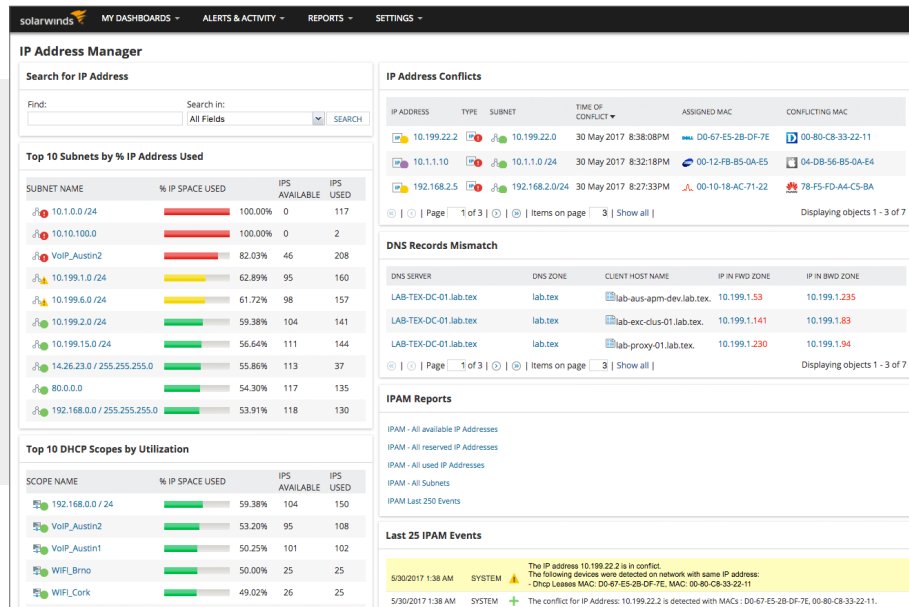


SolarWinds IP Address Manager

Simplify DHCP, DNS, and IP Address Management



Networks are getting bigger and more complex, driven by the need for greater performance, BYOD, server virtualization, cloud migration, and smart devices. Meeting these challenges begins with managing your inventory of IP addresses and vital DHCP and DNS resources. SolarWinds® IP Address Manager (IPAM) can provide you with centralized IP address management that works hand-in-hand with unified DHCP and DNS administration. This means teams can quickly find available addresses and easily configure them on DHCP and DNS systems.

WHY CHOOSE IP ADDRESS MANAGER?

- » Helps prevent IP conflicts with powerful IPv4 and IPv6 address management
- » Manages Microsoft®, Cisco®, and ISC DHCP servers, as well as Microsoft and BIND DNS servers
- » View subnets from all Infoblox® Network Views at the same time and segment subnets without the need to create a new Network View
- » Centrally monitors Amazon Route 53® and Azure® DNS zones and records
- » Helps avoid problems by monitoring and receiving alerts on subnet/scope depletion and IP conflicts
- » Automates static IP requests with IPAM's IP request form to speed the deployment of devices
- » Offers API support to provide two-way integration with third-party software

TRY IT FREE

30 days, full version

- » Enables the automated provisioning of virtual machines by integrating with VMware® vRealize® Orchestrator™
- » Integrates with SolarWinds Network Performance Monitor (NPM), User Device Tracker (UDT), and Server & Application Monitor (SAM)

TRY IT FREE

30 days, full version

FEATURES

IPv4 and IPv6 Address Management

IPAM actively identifies and manages IPv4 and IPv6 addresses and uses active scanning to discover and track subnets and associated address blocks. Finding an available address is as simple as navigating to a target subnet, viewing, and selecting an available IP address. Also, view transient IP addresses to easily identify orphaned IP addresses and reclaim them.

Integrated DHCP and DNS Configuration Management

IPAM works with your multi-vendor DHCP and DNS services—no additional proprietary software or hardware is required for management. You can easily unify and manage your Microsoft, Cisco, and ISC open source DHCP servers as well as your BIND and Microsoft DNS servers. The DHCP and DNS changes you make in IPAM are seamlessly propagated to the respective servers, enabling teams to easily find and configure IP addresses from a single management console.

Infoblox Monitoring

IP Address Manager can monitor your Infoblox® DHCP and DNS resources, allowing you to view subnets, DNS zones, and DHCP scopes in one place. Surface DNS mismatches and IP address conflicts on the main dashboard.

Monitoring and Alerting

IPAM automatically and proactively detects IP address problems that can eventually lead to network disruption. You can continuously monitor and improve IP performance with proactive detection of IP address problems, notification of IP address changes in the network, and access to utilization data on essential metrics for planning. Active monitoring and alerting helps eliminate network downtime due to IP conflicts and non-availability of IP addresses due to full subnets.

API Support

IPAM offers IPv4 and IPv6 API support with create, read, update, delete (CRUD) operations to provide two-way integration with third-party software. With CRUD operations, you can automate the creation, modification, and deletion of IP records. Additionally, you can create new subnets in IPAM and create/update/remove DNS entries through the API.

IP Request Form

The IP request form automates IP address requests from users to help save time and enhances network reliability. It allows those with the necessary permission to select the subnet on which they want their IP addresses, and then IPAM will automatically reserve them. It also gives restricted users a quick and dependable way to send requests to their administrator. In addition, SolarWinds IPAM offers automated reporting to track IP requests for compliance or change management purposes.

TRY IT FREE

30 days, full version

Integration With VMware vRealize Orchestrator

Automate the process of provisioning IP addresses and updating DNS records with IPAM's plug-in for vRealize Orchestrator. The plug-in contains over a dozen workflows and actions you can leverage to script or seamlessly integrate with vRealize Automation and vCenter Server®. IP Address Manager also enhances the monitoring of your virtual environment. For example, receive an alert if an IP address pool in your virtual environment is nearing depletion.

Role-based Administration

IPAM lets you independently manage your DHCP, DNS, and IP subnets. Work independently of other admin teams with IPAM, allowing each team to manage their own subnets, address blocks, and DHCP and DNS services without affecting each other. Role-based administration helps maintain security without limiting delegation of IP address management activities.

IP Conflict Detection Resource

Quickly tend to IP conflict issues and help avert network downtime. IPAM alerts you when there is an IP conflict on the network. Integration with SolarWinds User Device Tracker (optional) lays out detailed device and switch port information that aids in troubleshooting. Historical data on IP address usage reveals which device had the IP first. Using the remote shutdown option, you can immediately cut off network connectivity of the problematic device.

Integrated Endpoint Tracking

IPAM integrates with UDT to provide a single view of IP addresses and corresponding endpoint connection/location details. This enables improved troubleshooting and enhanced network access protection with port shutdown. Monitor suspicious activity in the network and track down rogue devices that are a threat to your network. When both IPAM and UDT are installed, IPAM displays corresponding switch port details and user information—all within the same integrated view. This helps you quickly track down and resolve network issues before they cause a major problem.

Global IP Address Search

IPAM can track down a specific IP address on your network typically in just seconds by performing a global search. You can quickly and easily access IP address data to search for available IPs and meet IP requests.

TRY IT FREE

30 days, full version

Subnet Allocation Wizard

You can specify supernet and subnet sizes so IPAM can automatically allocate the correctly-sized subnet. Subnet Allocation Wizard helps you efficiently organize your managed IP address space into subnets that are sized appropriately for the extent and traffic of your network. With its real-time subnet calculator, the IPAM Subnet Allocation Wizard allows you to quickly determine the most efficient way to subdivide any supernet.

Microsoft Active Directory

Leverage your existing Microsoft Active Directory® user accounts to allow users to log in to SolarWinds IPAM. You save time on configuring and creating separate logins for IPAM.

Automated IPv4 Subnet Discovery

SolarWinds IPAM helps you create an up-to date IP address map of your network by directly pulling data from router configurations and connected machines. The Automatic Subnet Discovery uses SNMP credentials for polling devices and discovers subnets from the routing table of the router.

Automated IP Address Scanning

IPAM allows you to easily set up scheduled, automatic scanning for both your IPv4 and IPv6 address space. Reduce manual errors and help ensure that your network's IP address information is up-to-date. Scheduled IP address scanning also helps you avoid IP address conflicts by recognizing transient IP status.

DHCP Split Scope Functionality

IPAM gives you quick and easy DHCP split scope configuration for high availability and load balancing of your critical DHCP services. IPAM allows you to quickly configure your DHCP split scope with a simple two-step wizard. Additionally, the centralized web console offers visibility into related scopes and scope distribution across subnets.

Advanced DHCP Configuration Options

IPAM allows you to directly configure standard DHCP options for your multi-vendor DHCP servers without having to log in to the DHCP server or deal with complicated CLI commands. The changes are automatically synced to the respective server, which can save you a lot of time on configuration and troubleshooting issues caused by human errors. IPAM offers DHCP configuration support for remote-boot devices.

TRY IT FREE

30 days, full version

Cloud DNS Monitoring

IPAM centrally monitors Amazon Route 53 and Azure DNS zones and records. DNS zones from multiple cloud accounts from both services are displayed in a single view. IPAM's interface is searchable and can be filtered based on record type.

Support for DHCP failover in Microsoft® Server 2012 and 2016

IPAM can monitor and manage your DHCP failover relationships (load balancing and hot standby configurations) to help ensure continuous availability of DHCP services to clients. It simplifies the management of failover relationships by configuring all relationships on a DHCP server on a single screen. IPAM also lets you quickly view and monitor all failover relationships on a DHCP server via a single pop-up window.

DNS Record Mismatch Detection, A and PTR Record Pairing

IPAM automatically detects and points out any mismatch in DNS forward and reverse record entries. Any disparity in the record is highlighted for easy identification so that it can be quickly fixed. Additionally, you can automatically create DNS PTR records when registering new devices into DNS zones. This helps ensure that there are no DNS record mismatches and helps eliminate the possibility of DNS issues due to human error.

Detailed Event Recording

IPAM automatically records all IP-related events and keeps a detailed activity log showing what changed and when for quick and easy troubleshooting. You can greatly reduce troubleshooting time by using these detailed activity logs to retrace events leading up to IP conflicts and other IP related issues.

Customizable Dashboard

IPAM provides a customizable dashboard that delivers the essential information you need in a unified, at-a-glance view for streamlined management and quick troubleshooting. IPAM's customizable dashboard includes resources like Top 10 data, recent events, IP conflict monitor, and so on. The IPAM dashboard also integrates with other SolarWinds management products including Network Performance Monitor, Server & Application Monitor, Network Configuration Manager, and more.

SYSTEM REQUIREMENTS

For detailed system requirements, please visit support.solarwinds.com

HARDWARE	MINIMUM REQUIREMENTS
CPU	IP1000 – 2.0GHz (Dual Core Recommended) IP4000 – 2.4GHz (Dual Core Recommended) IP16000 or IPX – 3.0GHz (Dual Core Recommended)
Memory	IP1000 – 4GB IP4000 – 8GB P16000 or IPX – 8GB
Hard Drive	IP1000 – 2GB IP4000 – 5GB IP16000 or IPX – 20GB
SOFTWARE	MINIMUM REQUIREMENTS
	Windows Server® 2016 Windows Server® 2019
OS	Microsoft Internet Information Services (IIS™) must be installed. SolarWinds recommends that IPAM administrators have local administrator privileges to help ensure full functionality of local Orion tools. Accounts limited to use of the IPAM Web Console do not require administrator privileges.
.NET Framework	Version 4.6.2
SNMP Trap Services	Windows operating system management and monitoring tools component
Database	SQL Server® 2017 (including installations on Linux®) SQL Server 2016, 2016 SP1 SQL Server 2014, 2014 SP1, 2014 SP2 SQL Server 2017, SQL Server 2019 Flexible deployment for Orion Platform-based network management products using Azure SQL Database. This gives you the choice of deploying any Orion Platform-based product on-premises or in the cloud.

TRY BEFORE YOU BUY. DOWNLOAD A FREE TRIAL.

Don't just take our word for it. At SolarWinds, we believe you should try our software before you buy. That's why we offer free trials that deliver full product functionality. Simply download and install the software, fire up auto-discovery, and take a break while SolarWinds IP Address Manager (IPAM) discovers your IP addresses. When you get back, your IP address management environment will be waiting for you—complete with out-of-the-box dashboards, alerts, reports, and more. It's just that simple.

TRY IT FREE

30 days, full version

ABOUT SOLARWINDS

SolarWinds (NYSE:SWI) is a leading provider of powerful and affordable IT infrastructure management software. Our products give organizations worldwide, regardless of type, size or IT infrastructure complexity, the power to monitor and manage the performance of their IT environments, whether on-premises, in the cloud, or in hybrid models. We continuously engage with all types of technology professionals—IT operations professionals, DevOps professionals, and managed service providers (MSPs)—to understand the challenges they face maintaining high-performing and highly available IT infrastructures. The insights we gain from engaging with them, in places like our **THWACK**® online community, allow us to build products that solve well-understood IT management challenges in ways that technology professionals want them solved. This focus on the user and commitment to excellence in end-to-end hybrid IT performance management has established SolarWinds as a worldwide leader in network management software and MSP solutions. Learn more today at www.solarwinds.com.

TRY IT FREE

30 days, full version

LEARN MORE

AMERICAS

Phone: 866.530.8100

Fax: 512.682.9301

Email: sales@solarwinds.com

EMEA

Phone: +353 21 5002900

Fax: +353 212 380 232

Email: emeasales@solarwinds.com

APAC

Tel: +65 6593 7600

Fax: +65 6593 7601

Email: apacsales@solarwinds.com

For product information about SolarWinds products, visit solarwinds.com, call, or email.

7171 Southwest Parkway | Building 400 | Austin, Texas 78735



For additional information, please contact SolarWinds at 866.530.8100 or email sales@solarwinds.com.

To locate an international reseller near you, visit http://www.solarwinds.com/partners/reseller_locator.aspx

© 2019 SolarWinds Worldwide, LLC. All rights reserved

The SolarWinds, SolarWinds & Design, Orion, and THWACK trademarks are the exclusive property of SolarWinds Worldwide, LLC or its affiliates, are registered with the U.S. Patent and Trademark Office, and may be registered or pending registration in other countries. All other SolarWinds trademarks, service marks, and logos may be common law marks or are registered or pending registration. All other trademarks mentioned herein are used for identification purposes only and are trademarks of (and may be registered trademarks) of their respective companies.

This document may not be reproduced by any means nor modified, decompiled, disassembled, published or distributed, in whole or in part, or translated to any electronic medium or other means without the prior written consent of SolarWinds. All right, title, and interest in and to the software, services, and documentation are and shall remain the exclusive property of SolarWinds, its affiliates, and/or its respective licensors.

SOLARWINDS DISCLAIMS ALL WARRANTIES, CONDITIONS, OR OTHER TERMS, EXPRESS OR IMPLIED, STATUTORY OR OTHERWISE, ON THE DOCUMENTATION, INCLUDING WITHOUT LIMITATION NONINFRINGEMENT, ACCURACY, COMPLETENESS, OR USEFULNESS OF ANY INFORMATION CONTAINED HEREIN. IN NO EVENT SHALL SOLARWINDS, ITS SUPPLIERS, NOR ITS LICENSORS BE LIABLE FOR ANY DAMAGES, WHETHER ARISING IN TORT, CONTRACT OR ANY OTHER LEGAL THEORY, EVEN IF SOLARWINDS HAS BEEN ADVISED OF THE POSSIBILITY OF SUCH DAMAGES.